

# ANNUAL REPORT | 2016-2017





**MISSION STATEMENT:**

*To support the aspirations of individuals living with a disability.*

**VISION STATEMENT:**

*All individuals are valued, accepted and can realize their potential.*

**VALUES:**

*ImagineAbility strives for excellence by conducting all of its activities in manners that foster:*

1. **“Integrity** --- *We maintain the highest standards of professional behaviour in our commitment to the people we support.*
2. **Inclusion** --- *We believe in community integration for everyone, allowing them to participate in all areas of society.*
3. **Advocacy** --- *We believe that human rights and freedoms are everyone’s birthright.*
4. **Independence and Informed Choices** --- *We promote independence as a principle of well-being, fostering personal choice(s) and individuality, and contributing to enriching people’s lives.*
5. **Collaboration and Teamwork** --- *We emphasize teamwork and collaboration, working together and synergistically with our stakeholders, developing and sharing expertise, to achieve goals and build mutual success.*
6. **Accountability** --- *We value fiscal responsibility, overall accountability, transparency, and absence of conflict of interest.*
7. **Respect** --- *We interact with all persons with respect, treating them with dignity and valuing their needs, aspirations and abilities.*
8. **Empowerment** --- *We actively encourage individuals to take charge for managing their responsibilities and future.*
9. **Safety** --- *We provide a safe environment for working, learning, and participating in recreation and leisure activities.*
10. **Transparency and Honesty with all our stakeholders** --- *We strive to be open, honest, timely, accurate, respectful, and authentic in all we do.*
11. **Continuous improvement and learning** --- *We regularly challenge the status quo to help secure improvements in all aspects of our organization, promoting excellence and innovation to bring unique and fresh approaches to both problems and opportunities.*
12. **Employees Matter** --- *Our staff are the active participants and contributors to achieving all of the above values, and are recognized for their critical role in helping us accomplish mission, vision, and goals.”*

---

## *Board of Directors*

---

Chair – Rob Olson

Secretary – Margaret Fair

Treasurer – Dave Finley

Director – Adele Domenco

Director – Al Moon

Director – Jackie Markstrom

Director – Marnie Danzinger

Director – Rudy Danzinger

Director – Shirley Grierson



---

## Message from the President and CEO

---

ImagineAbility is happy to share its 2016-17 Annual Report.

In this, its 55<sup>th</sup> year, the organization has much to be proud of that has been accomplished as we continue to evolve as an agency supporting people living with a disability.

During our 35<sup>th</sup> Annual Dinner Dance. We gave out **57** service awards for individuals celebrating anywhere from 5 - 50 years with the organization. Three individuals, **Denis Delorme, Robert Hallett and Glen Millar** received awards for 50 years with ImagineAbility!

Our Community Based Services and Individualized Services continue to grow. People are living the lives they want and our paramount goal is to continue to work alongside individuals to support them in reaching their aspirations.

We are thankful for our continued relationship with various school divisions throughout Winnipeg. This past year 115 students and 95 EAs attended ImagineAbility; a significant increase over last year.

The ImagineAbility Garden Group continues to thrive. Now in its fourth year and with the help of the West Kildonan Horticultural Society we have been able to add a greenhouse to complement the wheelchair accessible square foot garden and our garden plot with the St. James Horticultural Society.

We continue to benefit from our relationships with various business partners, helping us to support individuals who choose to work in the contract manufacturing and packaging environment.

Our partnerships with Canadian Manufacturers and Exporters and United Way give us the ability to speak to the business sector and the community-at-large. This helps to break down perceptions, highlight people's skills and abilities, and gives us the opportunity to advocate for an inclusive community where all people are valued and accepted.

The importance of the Art Zone and the empowerment of people through art continues to grow and has become a vitally important part of people's lives as an outlet for creativity, emotional expression and the development of people's voices and independence.

People's lives continue to be impacted and affected in a positive way and that is why we are here. Creating spaces and opportunities for community inclusion while continuing to provide the community that currently "is" ImagineAbility is part of the evolution of our services.

Thank you to Department of Families for partnering with us to support the aspirations of individuals living with a disability. Thank you to our other funders and business partners. Your support helps us to continue provide meaningful and relevant services for individuals. We are also deeply grateful to our volunteers and our community partners. Thank you to the wonderful staff and management team for their dedication and passion and to the Board of Directors for their wisdom and guidance.

With gratitude,



Audra Penner

---

## *Community Partners*

---

A & W

Agape Table

Children's Museum

Croc-A-Doodle

Dakota Community Centre

Elwick School

Giant Tiger

Holy Family Nursing Home

Home Run Sports Training Centre

Inclusion Winnipeg – Drama class

Klinic

Literacy Works

Main Street Project

Man Sheds

Manitoba Hydro

Meals on Wheels

Mooshiro Sushi Restaurant

Nomads Football Club

North End Women's Centre

Oakview Care Home

Old Spaghetti Factory

Pan Am Clinic

Penner Auto Body

Richmond Kings Community Centre

Royal Winnipeg Ballet

Safeway

Salvation Army Thrift Shop

Scrap Came Back

Seven Oaks Hospital

Shaw Cable

St. James Horticultural Society

West Kildonan Horticultural Society

Westminster Spaw

Winnipeg Blue Bombers

Winnipeg Pet Rescue Shelter

WRENCH

---

## *Business Partners*

---

Adams Supply  
Amsted Rail  
Boeing  
Brock White  
Cascade (formerly known as Norampac)  
Coghlan's  
Dave's Quick Print  
Dixon Bayco  
Endries  
Kitchen Craft  
Lift Innovations  
NeoSource  
Opportunity Partners Ltd.  
Reliance Products  
Royal Canadian Mint  
Solar Ear  
Smith & Doyle  
Think Shift  
Trap Tap  
Vita Health  
Western Canada Concrete Solutions  
Winnipeg Free Press

---

## Partners in Collaboration

---



MEEPA - Manitoba Employment Equity Practitioners Association



Abilities Manitoba



Inclusion Winnipeg



MSEN - Manitoba Supported Employment Network



Ccednet Canadian Community Economic Development Network



CME - Canadian Manufacturers and Exporters



Winnipeg Chamber of Commerce



ADSPM - Alliance of Direct Support Professionals of Manitoba

---

## Success Stories

---

- **Wayne** has secured a position with the **Winnipeg Regional Health Authority (WRHA)** as a Pan Am Clinic Ambassador.
- **David** has increased his days of working at **Penner Autobody** from two to three days a week.
- **Sean**, a student entering services in July 2016 secured seasonal, paid position at the **Richmond Kings Community Centre**. His primary duties are club and ice maintenance, change room supply and managing of sports equipment.
- **Shane** obtained a volunteer placement at **Winnipeg Pet Rescue Shelter**.
- **Fred** is working at **Home Run Sports Training Centre**. The site is home to the province's elite baseball players and Fred's main responsibilities are ensuring the training equipment is in working condition, and the site is clean and safe for all visitors.
- **Bob**, a long time service user, expressed a desire to work in the community. This year, with the support of ImagineAbility and his residential agency (WinnServ) he found employment at an **A&W Restaurant** near his home.
- **The Scrap Came Back** is a fellow agency (DASCH) initiative focusing primarily on supporting local artists and promoting awareness on a conscious effort to recycle and repurpose various used materials for artistic designs. **Miranda** works on Thursdays in the storefront. Miranda has also published a book of Poetry and Artwork titled "*Words from my Heart*" and continues her studies at Red River College in Library Sciences.
- **Hari** volunteers at **Sam's Place** (a used book store, café and music venue) every Thursday.
- **David M.** volunteers at the **Children's Museum** every Friday.
- **Dennis** works at **Agape Table** on Monday and Thursday, helping to package eggs and waits on tables and helps with clean up/take down after the meal.
- **Ronald** works with the staff at **Holy Family Nursing Home** and is responsible for transporting the residents to and from their physiotherapy sessions.
- **Kristen** goes to **Croc-A-Doodle** every Tuesday morning to clean tables and chairs and has built good relationships with their staff.
- **Cory** works at **Safeway** and has become much more independent and confident with his position.
- **Bradley** and **Jeff** volunteer every Thursday at **WRENCH**: a non-profit bike repair shop run by volunteers.
- We are grateful for our continued long standing relationship at **Manitoba Hydro** (360 Portage and Taylor locations) People who work, train or have received training this year include: **Kristen, Ronald, Andrew, Melanie, Nancy, Colleen, Barbara, Bradley and Carlos**.
- **Kari's** Shaw Cable Access Network series "**Stigma Warriors**" continues to produce episodes. Now in its third year with and with 15 episodes under its belt, some of this year's topics have included paid employment and inclusion for individuals of all abilities in the arts.



---

## Success Stories Continued

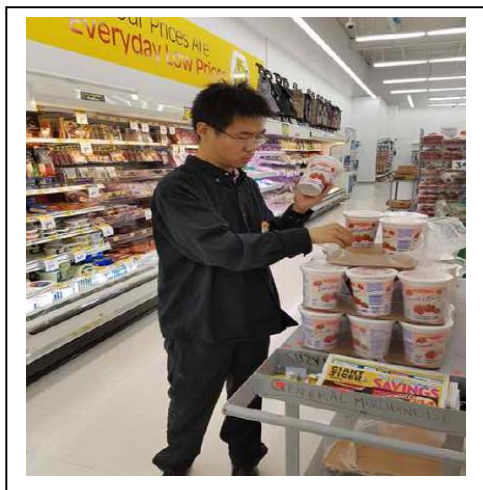
---

### Leaha- Community Volunteer



Leaha is an ambitious woman who is taking the world by storm. Her drive to help others is unparalleled and exhibits this through her desire to give back through community volunteering. Leaha has been engaged in ImagineAbility's community based programming that includes Oakview Care Home, Meals on Wheels, Fruit Share and Main Street Project, yet she still maintains a willingness to continue providing selfless care for her peers and community members. Leaha has recently begun training at the Salvation Army Thrift Shop as a donation intake sorter. When presented with the opportunity, Leaha expressed she would enjoy the position as "it helps those who have less." A very humbling statement by a woman who displays her commitment to others as she works with ImagineAbility to accomplish her goals.

### Yilong - Giant Tiger



Personable, hardworking, and a willingness to learn and excel at a new task, Yilong has carved a niche out for himself and is a relied on, contributing member of the team at Giant Tiger. The idea of an inclusive, respectful workplace that values teamwork has always been of importance to Yilong and he currently works 3 days a week at the Pembina location. Although Yilong is an adult living with an intellectual disability, his main challenge is the language barrier that exists. Yilong was born and raised in China and his first language is Mandarin. As part of his personal goal plan, Yilong wanted to continue working on his written and spoken English, and thus far has continued to improve his communication. Considering the way he has approached his other goals, it is certain Yilong will succeed in his endeavors.

“If you get relationships right....everything else will fall into place.”

- David Pitonyak

“May your choices reflect your hopes, not your fears.”

- Nelson Mandela

“The best and most beautiful things in the world cannot be seen or even touched  
– they must be felt with the heart.”

Helen Keller





ImagineAbility  
500 Madison Street  
Winnipeg, MB R3H 0L4  
Phone: 204-956-9700  
Fax: 204-943-1893  
E-mail: [info@imagineability.ca](mailto:info@imagineability.ca)  
Website: [www.imagineability.ca](http://www.imagineability.ca)